



The National School Food Program in Brazil - A Conversation

Centre for Studies in Food Security, Ryerson University

March 26, 2021

Named after a Brazilian human rights and food activist, the *Betinho Project* aims to discuss participatory, democratic processes for achieving food security. Herbert “Betinho” de Souza was a humanitarian forced into exile by the military dictatorship in Brazil in the 1970s. During this time, Betinho lived for five years in Toronto, Canada. The *Betinho Project* aims to celebrate his life and work “against hunger and for life” everywhere in the world.

<https://www.ryerson.ca/foodsecurity/projects/betinho-project>

Welcome and Land Acknowledgement

"Toronto is in the 'Dish With One Spoon Territory'. The Dish With One Spoon is a treaty between the Anishinaabe, Mississaugas and Haudenosaunee that bound them to share the territory and protect the land. Subsequent Indigenous Nations and peoples, Europeans and all newcomers have been invited into this treaty in the spirit of peace, friendship and respect."

Brazil's National School Food Program (PNAE)

- Created in 1955; extensively reformulated in 2009
- Provides meals to over 42 million students in public schools
- Federal funding per child/day (for food): varies from R\$0.32 (for youth) to R\$1.07 (for daycare centres) (*R\$1 = CDN\$0.23*)
- Indigenous and Afro-descendent (*quilombolas*) schools: R\$0.64
- 2009 federal legislation requires 30% of funds to be spent on purchases from family farms

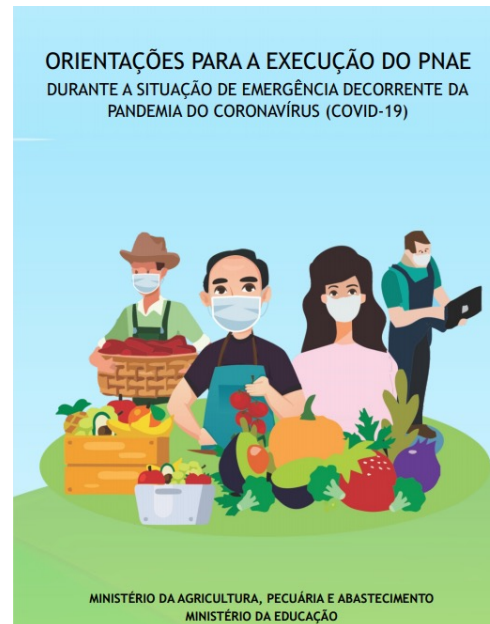
<https://youtu.be/OGNvyi2CWol> (2017)

- In 2020 legislation was amended to limit the purchase of processed and ultra-processed foods to a maximum 20% of expenditures, and have at least 75% of funds spent on the purchase of minimally-processed or *in-natura* foods.

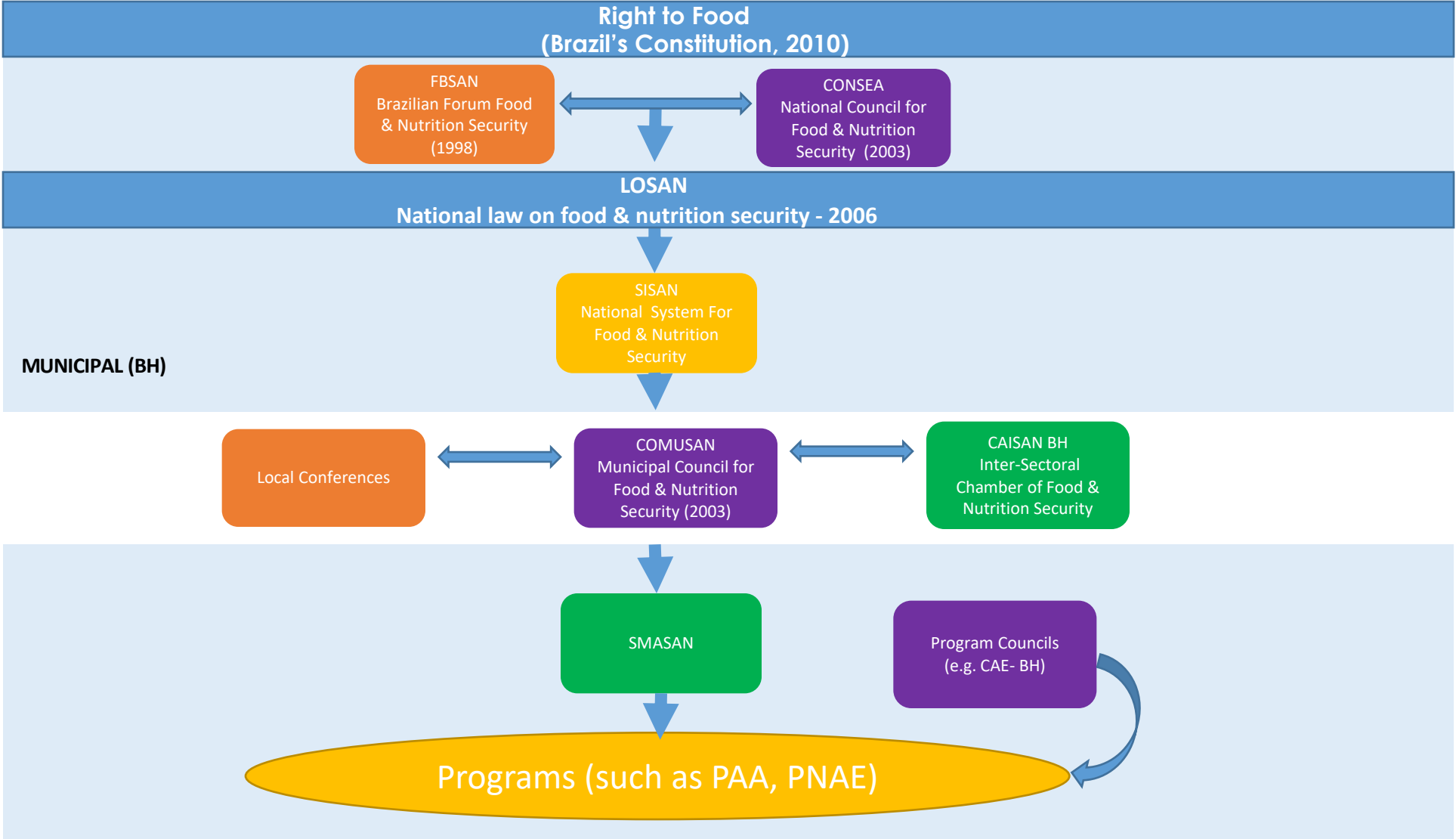


COVID-19 Pandemic

- April 2020: temporary legislation allowing the distribution of food purchased with PNAE funds directly to households of students in the public school system (while schools remained closed).



Participation of civil society





School in Belo Horizonte (2015)



SUSTAINABLE SCHOOL FEEDING PROGRAM

ARTICULATION
INTERINSTITUTIONALITY
CIVIL SOCIETY PARTICIPATION

LEGAL FRAMEWORK
LAWS,
RESOLUTIONS,
DECREES,
REGULATIONS

BUDGET
ENSURE
RESOURCES
ANNUALLY

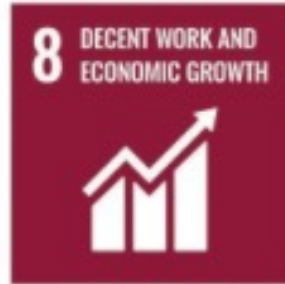
COMUNICATION
AND EDUCATIONAL
STRATEGIES

BIDS
ADAPTATION OF
PROCUREMENT
TERMS

FAMILY FARM
MAPPING AND
SUBSIDIES

FOOD AND NUTRITIONAL
EDUCATION
SCHOOL GARDENS
LIKE A
PEDAGOGICAL
TOOL

SUSTAINABLE DEVELOPMENT GOALS



Thank you!

These slides will be available on our website:

<https://www.ryerson.ca/foodsecurity/projects/betinho-project/>